

ORKEESWA SCHOOL

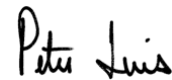
2020 ANNUAL REPORT

THANK YOU

Dear supporters,

At Orkeeswa, we are building and supporting strong local leaders. That is why we were able to respond to the challenges of 2020 with resilience and resolve. This year, we established a new Leadership Team at Orkeeswa School with the promotion of Elly Nnko as our first female Head of School and Hosea Isaya as our first alumni in the role of Assistant Head of School. These leaders are working hard to fortify our holistic programming to ensure that Orkeeswa operates at a high standard for years to come. We are building strong foundations for innovative programs in the community through our Primary School Outreach Program and Social Innovation Lab and we are investing more resources to support the work and vision of our community of local leaders. We are excited for the growth that lies ahead of us. Thank you for joining us on this journey and supporting this important work.

With gratitude,



Peter Luis, Founder/Executive Director



MEET OUR NEW LEADERS

[Watch the video](#)



“It is a huge opportunity being a female leader in a community where women are less likely to lead. I am inspiring young girls by changing the narrative. I choose to challenge my fellow women in any community to step up and take leadership roles.”

- Elly Nnko, Orkeeswa Head of School -

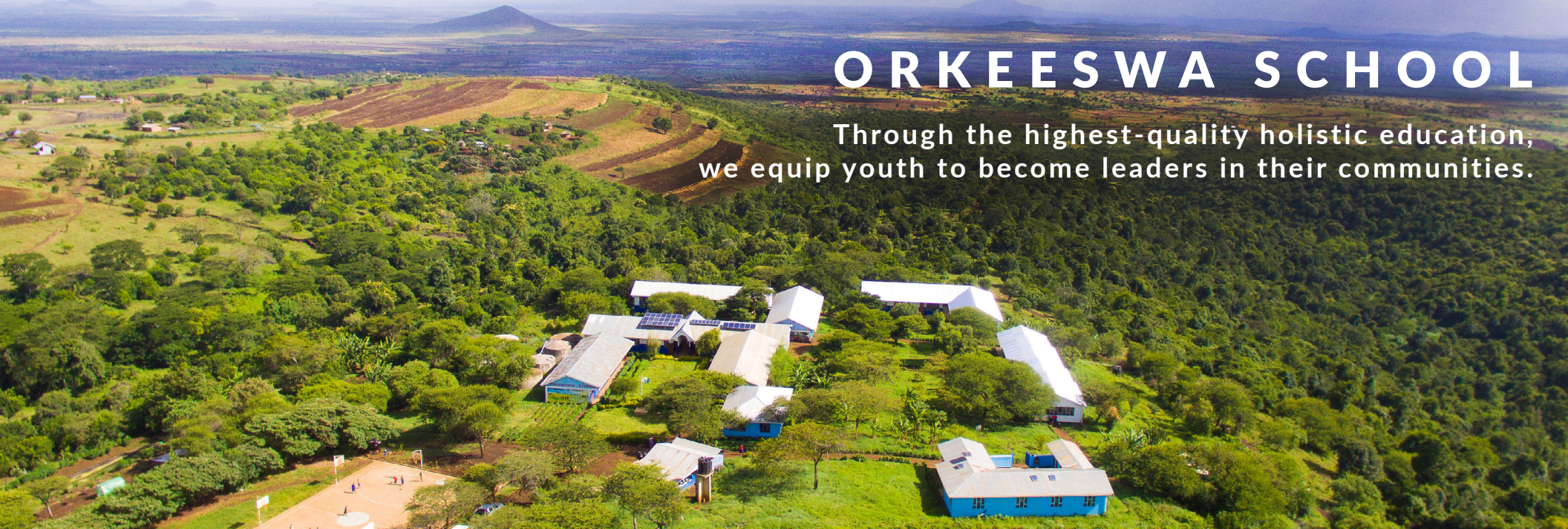


“It means a lot for me to be a member of the leadership team. I grew up in this community, and I was once a student here. Representing this community is a huge responsibility and I take this job very seriously. I am bringing the voice of the students and the voice of my community.”

- Hosea Isaya, Orkeeswa Assistant Head of School -

ORKEESWA SCHOOL

Through the highest-quality holistic education,
we equip youth to become leaders in their communities.



2008
School Opened

Development of the
Orkeeswa School Model

2017
Strategic Plan

Development of the
Community Impact Model

2021
Strategic Plan

Accelerated Growth

In 2008, responding to a high demand for access to secondary education, Orkeeswa School opened in an under-served Maasai community in northern Tanzania on land donated by local leaders. In Orkeeswa Village 78% of families live below the poverty line, and face significant challenges with gender discrimination, environmental degradation, access to high-quality social services, and more.

We believe effective and sustainable community development must come from within – conceived, implemented and managed by local leadership. Orkeeswa’s model of holistic, community-based education prepares students to become leaders in their communities, equipped to take on these challenges now and in the future. Since 2017, we have been developing a model for community impact that goes beyond high-quality secondary education.



ORKEESWA IS MORE THAN A SCHOOL

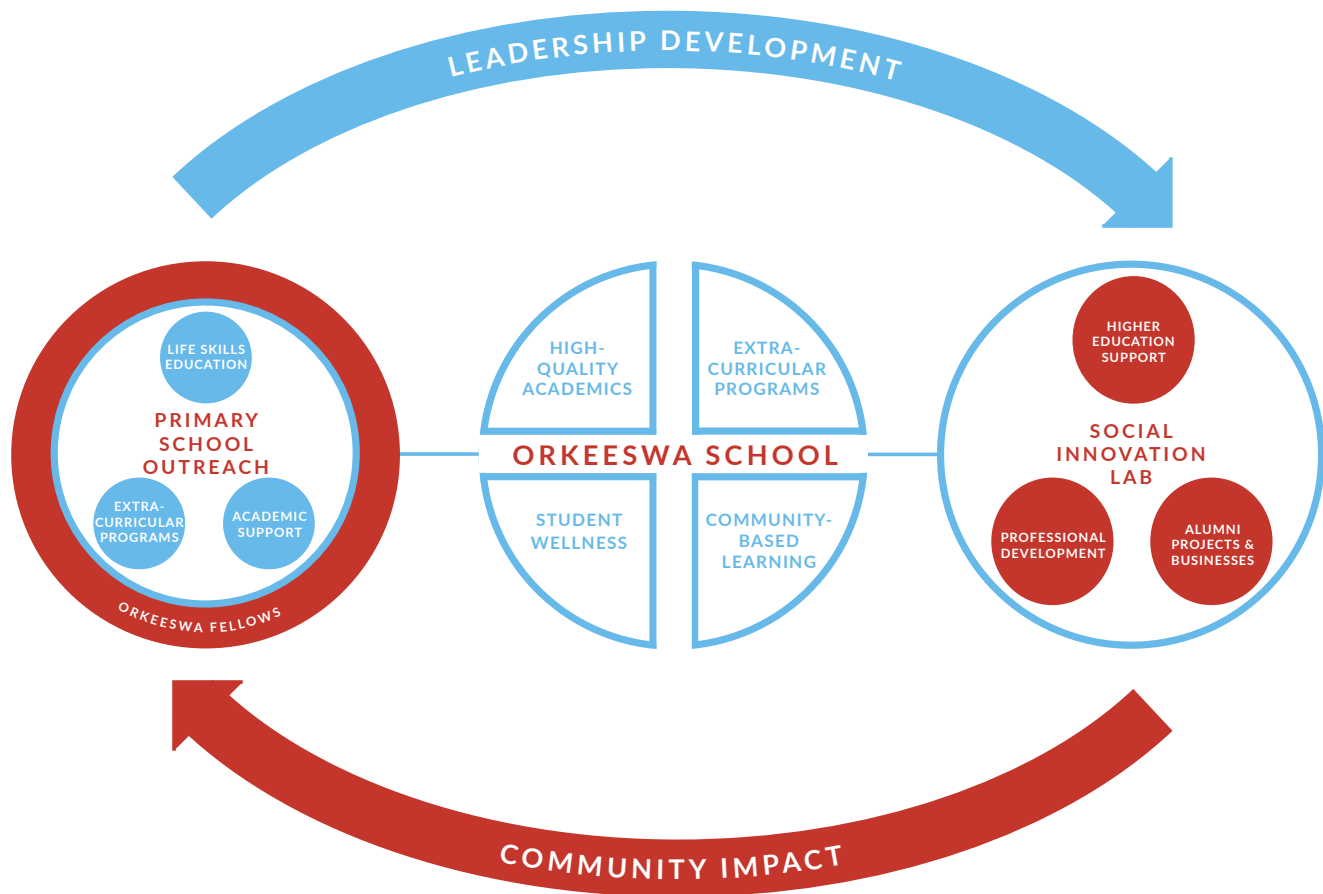
We catalyze communities to design and implement their own solutions to local challenges.

Samwel,
10th Grade Student &
Primary School Mentor

We are re-inventing what it means to be a school and its relationship to the community it serves. We have recognized the leadership potential of our students and alumni, and have developed a community impact model that leverages collaboration with these leaders to make an even greater and more sustainable impact. To achieve this, we:

1. **Operate our core program, Orkeeswa School**, a high-quality, holistic, and community-based secondary school that focuses on practical learning and hands-on opportunities for leadership and community service.
2. **Lead Primary School Outreach** to engage Orkeeswa students and alumni in providing academic support, life skills education and extra-curricular programming to develop leaders and problem-solvers from an early age.
3. **Run a Social Innovation Lab**, providing higher education support, professional development, small grants and mentorship for alumni to design and implement their own solutions to local challenges.

ORKEESWA COMMUNITY IMPACT MODEL



“Orkeeswa is unique. I have witnessed alumni addressing challenges in their communities and growing their leadership skills day by day. Our alumni are setting very good examples to the young boys and girls in their community.”

- Elly, Orkeeswa Head of School

ORKEESWA SCHOOL

The best leaders are well-rounded. They are able to think creatively, inspire and motivate community members, and apply actionable solutions to complex problems. Our holistic, community-based programs are designed to nurture our students' creativity, allowing them to hone their own unique leadership styles, while building their capacity to think outside the box. **Our model works toward a more practical and community-oriented education that recognizes all students' potential to be change-makers.**

2020 HIGHLIGHTS

48 new students, 67% of whom are female

30 students graduated from Orkeeswa School

10th grade students rank #1 in Agriculture in the Arusha Region

100% student pass rate on 8th, 10th and 12th grade national exams

Students contributed over 7,500 hours of community service

2021 GOALS

Develop comprehensive Career & College Prep curriculum

Upgrade technology education and resources

Implement a holistic database management system



Lucas,
7th Grade Student &
Chess Club Member

315
STUDENTS

65%
FEMALE

9:1
STUDENT-TEACHER
RATIO



“Because of Orkeeswa, I now feel like a strong young lady. I have the drive to inspire other young ladies and motivate them to tap into the opportunities in front of them.”

Paulina, Orkeeswa 10th Grade Student

PRIMARY SCHOOL OUTREACH

The primary schools in our community are some of the lowest-performing, least-resourced schools in the country. Many girls are susceptible to early marriage arrangements before entering secondary school. **Our Primary School Outreach Program makes life skills education, extra-curricular programming and academic support a normal part of these primary school students' education.** Led primarily by Orkeeswa students and alumni, this outreach is also a testament to the power of local, sustainable leadership.

2020 HIGHLIGHTS

Trained an additional 25 Orkeeswa students as primary school mentors

Formalized partnership with local government to implement programs

Expanded to 2 primary schools for a total of six schools

Facilitated daily extra-curricular programming in three primary schools

Secured \$85k funding to expand primary school sports program

2021 GOALS

Expand programming to 2 additional primary schools for a total of 8

Build three basketball courts to expand daily sports programming

Formalize Life Skills education in primary schools



Sophia,
3rd Grade Student &
Basketball Player

3,300
STUDENTS

6
PRIMARY
SCHOOLS

220
TRAINED
MENTORS



“Role models like us are very important to these primary school students. When we talk to them about what we have accomplished, it is eye opening to them. We inspire them to keep going.”

— Catherine, 10th Grade Orkeeswa Student & Primary School Mentor

SOCIAL INNOVATION LAB

Orkeswa alumni have a strong sense of purpose, academic achievement, leadership skills, and commitment to their community. **Our Social Innovation Lab provides alumni with higher education support, professional development opportunities, small grants, and mentorship for local projects and business start-ups.** The result is a cadre of local leaders equipped with the skills and resources to make an immediate and sustained impact on their community.

2020 HIGHLIGHTS

Orkeswa alumni established 3 local community-based organizations

16 Orkeswa alumni provided community support during Covid-19 shutdown

5 new Global Scholars attending university in USA, Rwanda and Kenya

Provided support for 45 alumni to attend college/university

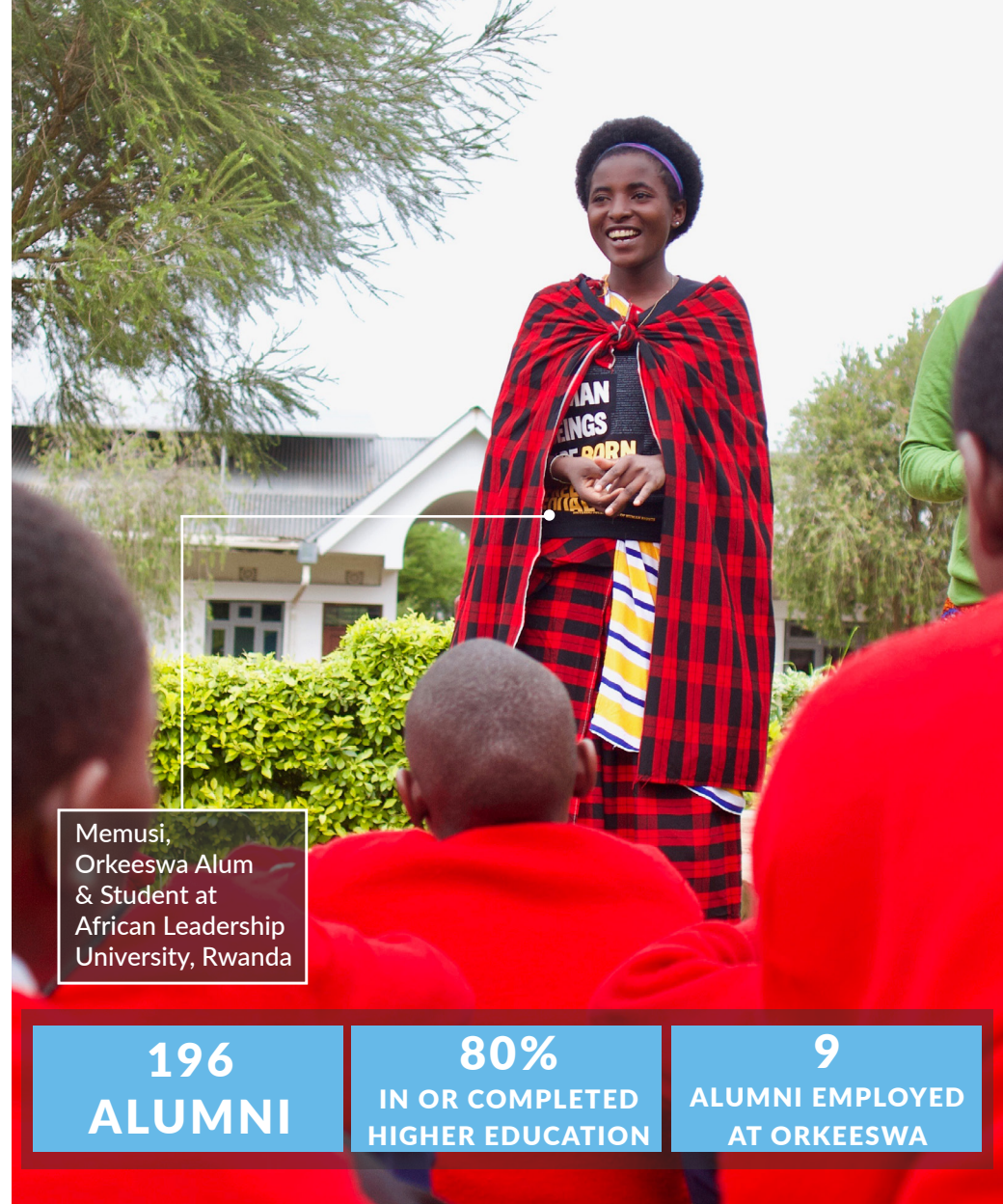
Hired alum to oversee alumni network & develop Social Innovation Lab

2021 GOALS

Provide financial support for 60 alumni to attend college/university

Support 2-5 alumni projects with small grants & mentorship support

Provide 2-3 Professional Development workshops for alumni



Memusi,
Orkeswa Alum
& Student at
African Leadership
University, Rwanda

196
ALUMNI

80%
IN OR COMPLETED
HIGHER EDUCATION

9
ALUMNI EMPLOYED
AT ORKEESWA



“Giving back to the community has always been an Orkeeswa anthem. I know that the problem solvers in the community are us. There is a lot that needs to be done, and I can help to achieve that through partnership and collaboration.”

— Saingorie, Orkeeswa Alum
Founder of Women's Agro-Enviro Vision

[Read Saingorie's Story](#)

STRATEGIC PLAN GOALS

Retain each Orkeswa student through seven years of our program.

Facilitate graduates returning to their community, equipped and inspired to make a positive impact.

Expand our impact within the Orkeswa community and beyond.

Strengthen leadership and governance to build a more durable organization.

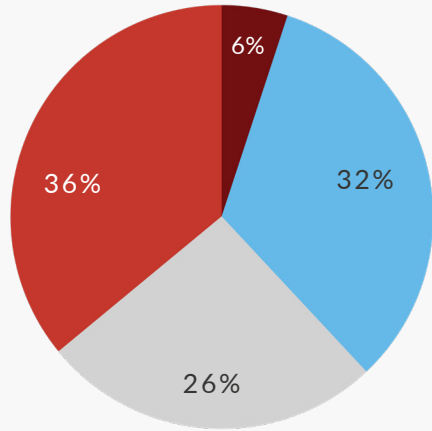
Build a base of reliable and diverse funding to ensure sustainability and longevity of our program and impact.

2021 STRATEGIC PRIORITIES

We are at the threshold of big change as an organization. In 2021, our team will develop a new Strategic Plan to guide our priorities for the next few years, while unifying around a longer term vision of impact. This process will center the voices of our team members, students, alumni, community members, and partners. We plan to lay foundations for growth by investing in the organization of our operations team, developing a fundraising strategy to meet the demands of programmatic growth ahead, implement a robust Monitoring and Evaluation system to measure and communicate our impact internally and externally, while researching and designing our outreach programs for maximum impact.

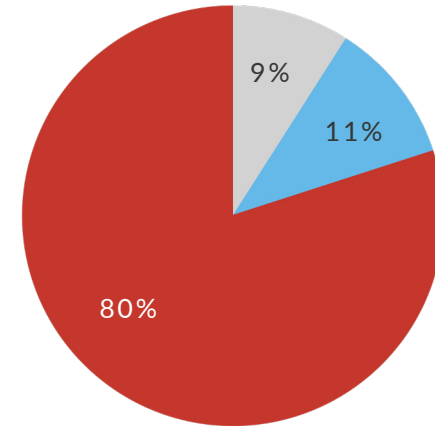


2020 REVENUE REPORT



SCHOLARSHIPS	\$490,496
INDIVIDUAL DONATIONS	\$351,024
GRANTS & FOUNDATIONS	\$446,062
CAPITAL	\$84,710
TOTAL REVENUE	\$1,372,292

2020 EXPENSE REPORT



PROGRAM COSTS	\$869,985
ADMINISTRATIVE COSTS	\$122,659
FUNDRAISING COSTS	\$96,751
TOTAL EXPENSES	\$1,089,396

Orkeeswa School is committed to fostering a culture of financial transparency and efficient spending practices to maximize the impact of every dollar we raise.



[Watch the video](#)

“I want Orkeeswa to produce girls who can stand up for their rights, who are empowered, and girls who know their vision and goals for their communities. Stronger women make stronger communities.”

— Zainabu, Orkeeswa Alum
Post-Graduate at Brewster Academy, USA



www.orkeeswa.org

info@orkeeswa.org | P.O. Box 133, Ogallala, NE 69153